

Oral-B®

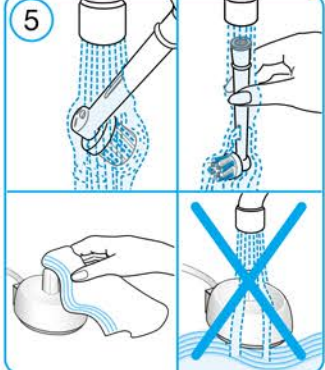
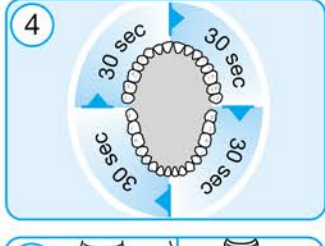
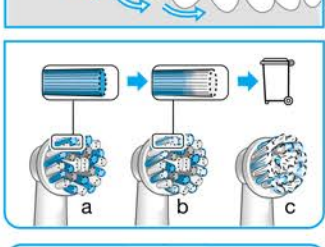
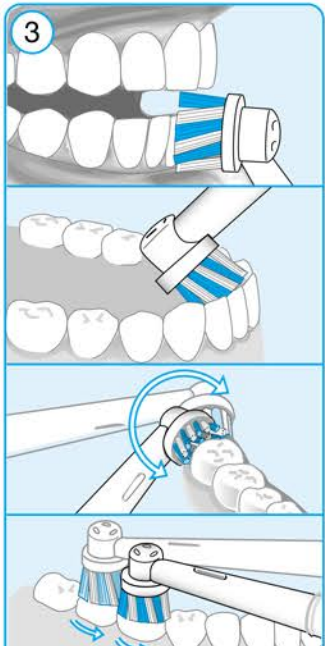
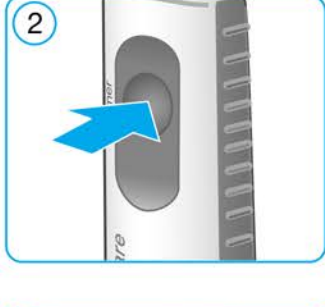
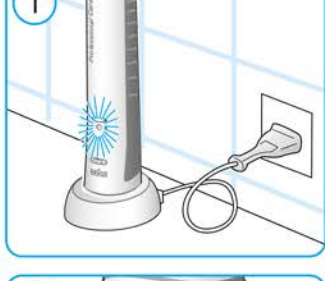
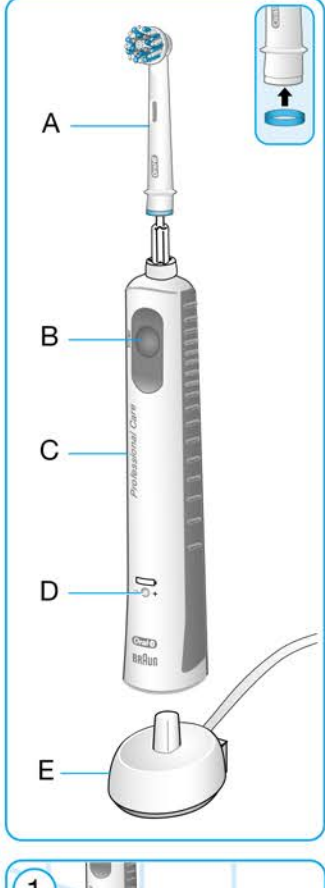
PRO

powered by **BRAUN**

450



Charger Type 3757
Handle Type 4729



English

Before operating this toothbrush, please read these instructions and save this manual for future reference.

IMPORTANT

- Periodically check the cord for damage. If cord is damaged, take the charging unit to an Oral-B Service Centre. A damaged or nonfunctioning unit should no longer be used. Do not modify or repair the product. This may cause fire, electric shock or injury.
- This product is not intended for children 3 years and under. Children from 3 to 14 years and persons with reduced physical, sensory or mental capabilities or lack of experience and knowledge can use the toothbrush, if they have been given supervision or instruction concerning use of the appliance in a safe way and understand the hazards involved.
- Cleaning and maintenance shall not be performed by children.
- Children shall not play with the appliance.
- Use this product only for its intended use as described in this manual. Do not use attachments which are not recommended by the manufacturer.

WARNING

- If the product is dropped, the brush head should be replaced before the next use even if no damage is visible.
- Do not place the charger in water or liquid or store where it can fall or be pulled into a tub or sink. Do not reach for it when fallen into water. Unplug immediately.
- Do not disassemble the product except when disposing of the battery. When taking out the battery for disposal of the unit, use caution not to short the positive (+) and negative (-) terminals.
- When unplugging, always hold the power plug instead of the cord. Do not touch the power plug with wet hands. This can cause an electric shock.
- If you are undergoing treatment for any oral care condition, consult your dental professional prior to use.
- This toothbrush is a personal care device and is not intended for use on multiple patients in a dental practice or institution.
- Replace brush (head) every 3 months or sooner if brush head becomes loose due to damage.

Specification

For voltage specifications refer to the bottom of the charging unit.

Description

- A Brush head
- B On/off button
- C Handle
- D Charge indicator light
- E Basic charger

Connecting and charging

Your toothbrush has a waterproof handle, is electrically safe and designed for use in the bathroom.

- Plug the basic charger (E) into an electrical outlet and place the toothbrush handle (C) on the charging unit.
- The green charge indicator light (D) flashes while the handle is being charged. Once it is fully charged, the light turns off. A full charge can take up to 22 hours and enables up to seven days of regular brushing (twice a day, 2 minutes) (picture 1).
Note: After deep discharge, the light might not flash immediately; it can take up to 10–15 minutes.
- If the rechargeable battery is low the red charge indicator light (D) is flashing for some seconds when turning your toothbrush on/off.
- For everyday use, the toothbrush handle can be stored on the plugged-in charging unit to maintain it at full power. Overcharging is impossible.

- To maintain the maximum capacity of the rechargeable battery, unplug the charging unit and fully discharge the handle with regular use at least every 6 months.

Using your toothbrush

Brushing technique

Wet brush head and apply any kind of toothpaste. To avoid splashing, guide the brush head to your teeth before switching on the appliance (picture 2). Guide the brush head slowly from tooth to tooth, spending a few seconds on each tooth surface. Start brushing the outsides, then the insides and finally the chewing surfaces. Brush all four quadrants of your mouth equally. You may also consult your dentist or dental hygienist about the right technique for you (picture 3).

In the first few days of using any electric toothbrush, your gums may bleed slightly. In general, bleeding should stop after a few days. Should it persist after 2 weeks, please consult your dentist or dental hygienist.

Professional Timer

A short stuttering sound at 30-second intervals reminds you to brush equally all four quadrants of your mouth. A long stuttering sound indicates the end of the professionally recommended 2-minute brushing time (picture 4). The elapsed brushing time is memorised, even when the handle is briefly switched off during brushing. When pausing longer than 30 seconds the timer resets.

Pressure Sensor

Your toothbrush has a pressure control feature installed. If too much pressure is applied, the oscillating movement of the brush head will continue but the pulsation will stop. In addition you will hear a different sound while brushing.

Brush heads

Oral-B offers you a variety of different Oral-B brush heads that fit your Oral-B toothbrush handle.

Oral-B CrossAction brush head



Our most advanced brush head. Angled bristles for a precise clean. Lifts and powers away plaque.

Oral-B Precision Clean brush head



provides effective and gentle cleaning action to help protect both teeth and gums. The brush head cups each tooth with a curved bristle trim and reaches deep between teeth at the same time.

Oral-B FlossAction brush head



features micropulse bristles that allow for an outstanding plaque removal in the interdental areas.

Oral-B ProWhite brush head



features a special polishing cup to naturally whiten your teeth. Please note that children under 12 years old should not use the Oral-B ProWhite brush head.

Oral-B brush heads feature light blue INDICATOR® bristles to help you monitor brush head replacement need. With thorough brushing, twice a day for two minutes, the blue color will fade halfway approximately within 3 months, indicating the need to exchange your brush head. If the bristles splay before the color recedes, you may exert too much pressure on teeth and gums (picture 3).

We do not recommend using the Oral-B FlossAction or Oral-B ProWhite brush head with braces. You may use the Oral-B Ortho brush head, specifically designed to clean around braces and wires.

Cleaning Recommendations

After brushing, rinse your brush head for several seconds under running water with the handle switched on. Switch off the handle and remove the brush head. Rinse both parts separately under running water then wipe them dry before reassembling the toothbrush. From time to time also clean the charging unit with a damp cloth (picture 5). Never place the charger in dishwasher or water.

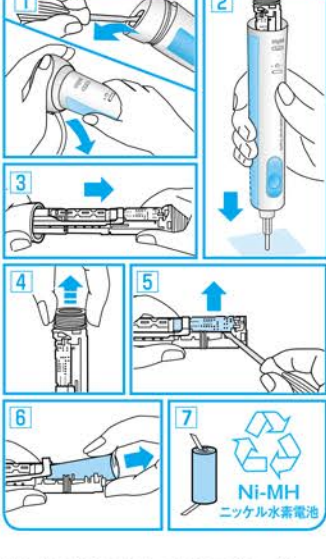
Subject to change without notice.

Product contains batteries and/or recyclable electric waste. For environment protection do not dispose in household waste, but for recycling take to electric waste collection points provided in your country.



Battery removal at the end of the product's useful life

Open the handle as shown, remove the battery and dispose of it according to local environmental regulations.



Caution! Opening the handle will destroy the appliance and invalidate the warranty.



(TH) 1-800-295-545

(PH) 1-800-1-888-8008

(MY) 1 800 815 380

(SG) 8001 205 607

อินเทอร์เน็ต:

Internet:

www.oralb.com

www.braun.com

www.service.braun.com

Braun GmbH

Frankfurter Straße 145

61476 Kronberg/Germany

เครื่องชาร์จแบตเตอรี่ประเภท 3757

ด้ามจับประเภท 4729

Charger type 3757

Handle type 4729